

Cueva Santa Rosa

Topographical Quadrant: E14B87
Municipal Region: Santa María Chilchotla
Oaxaca, Mexico

Horizontal Length: 352.0 m
Cave Depth: 155.2 m

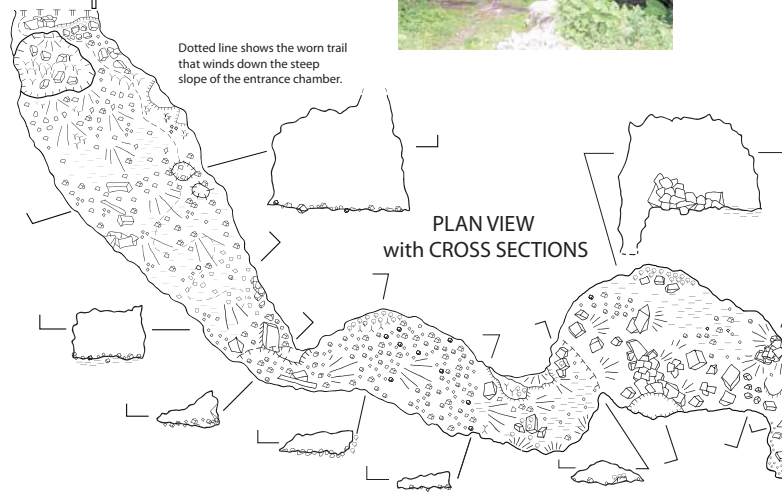
Proyecto Sierra Mazateca
Director: Antonio Jiménez Figueroa
Surveyed January 9, 2011 by:
Marion Akers
Tony Akers
Simon Akers
Brian Grubb
Cathy Sacilowski

Antonio at Entrance



Entrance

Dotted line shows the worn trail that winds down the steep slope of the entrance chamber.

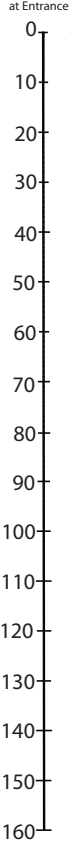


PLAN VIEW with CROSS SECTIONS



Flowstone wall with black crust

Altar at Entrance



Looking up and down the entrance slope



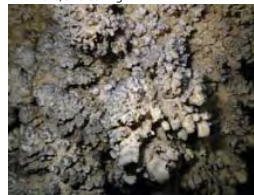
Large troglomorphic tarantulas were found in the final room

VERTICAL PROFILE @180°

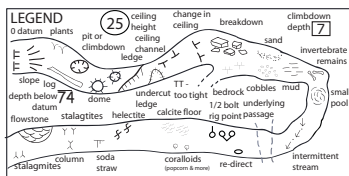
Marion, Simon, Cathy, & Brian



Popcorn-encrusted breakdown, walls, and ceiling



Scale in Meters
0 5 10



-Suunto, Tape, and Disto Survey
-Data reduced using Compass software
-Digital map produced with Adobe Illustrator software
-Cartography: Marion Akers 2011
-Photos: Marion Akers

Cueva Santa Rosa
Mpo. Santa María Chilchotla
Oaxaca